

New European Responsible Care[®] management framework and self-assessment tool

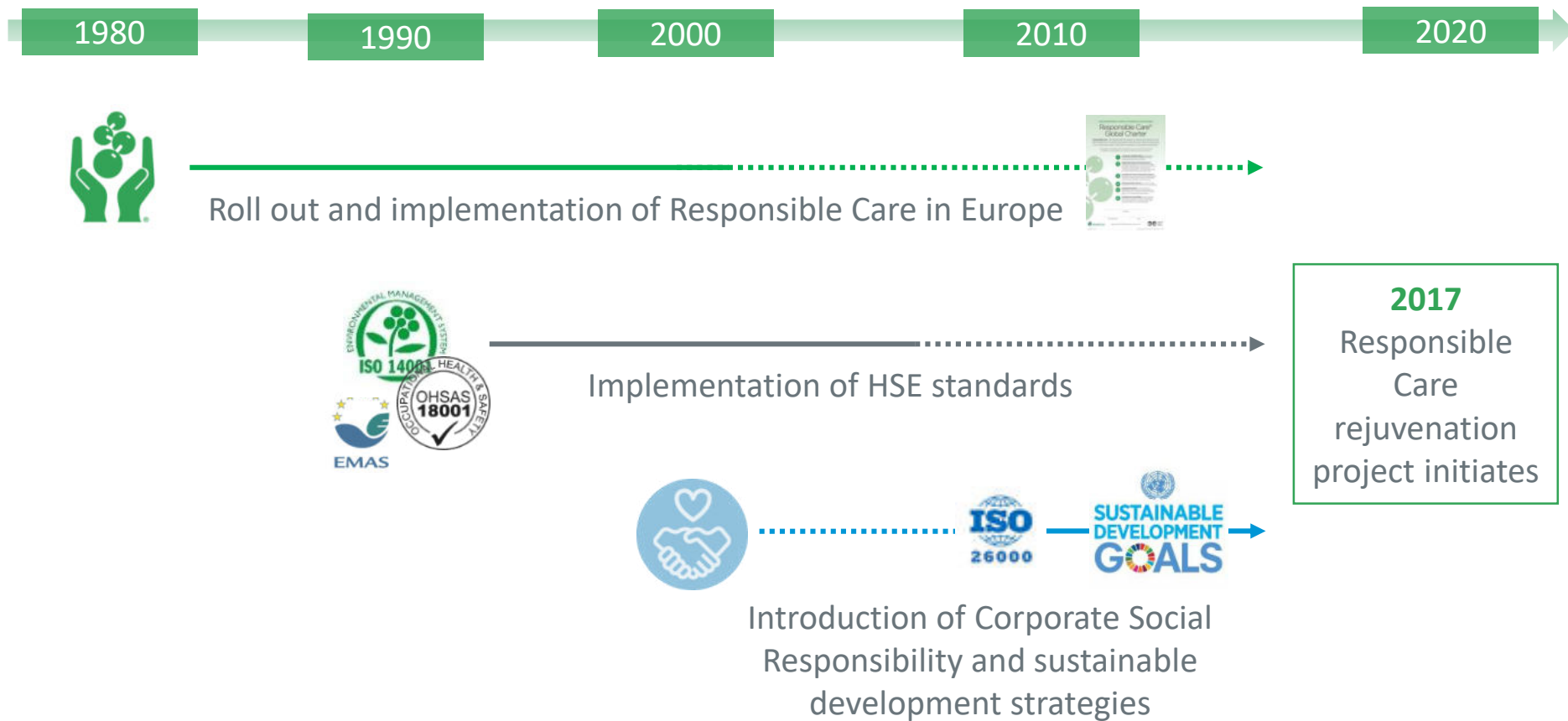


Launch in Hungary 6-11-2019

Giulia Casasole-Responsible Care manager at Cefic



The challenge after three decades of Responsible Care in Europe



Core elements of the Responsible Care rejuvenation



Connecting Responsible Care to standards & sustainability principles

Development of practical support (Responsible Care management framework and self-assessment tool) for regional harmonisation

Creation of maturity levels driving continuous improvement



1. Connection of the Responsible Care global charter to standards & sustainability principles



EMAS
GEPRÜFTES
UMWELTMANAGEMENT

American Chemistry Council
RC14001

American Chemistry Council
RCMS

SUSTAINABLE DEVELOPMENT GOALS

Chemistry Can

THE INTERNATIONAL COUNCIL OF CHEMICAL ASSOCIATIONS

Responsible Care[®] Global Charter

Responsible Care is the global chemical industry's unifying commitment to the safe management of chemicals throughout their life cycle, while promoting their role in improving quality of life and contributing to sustainable development.

As a signatory to the Responsible Care Global Charter my company will actively strengthen the Responsible Care initiative worldwide and is committed to:

- 1 Corporate Leadership Culture** that proactively supports safe chemicals management through the global Responsible Care initiative
- 2 Safeguarding People and the Environment** by continuously improving our environmental, health and safety performance; the security of our facilities, processes and technologies; and by driving continuous improvement in chemical product safety and stewardship throughout the supply chain
- 3 Strengthening Chemicals Management Systems** by participating in the development and implementation of lifecycle-oriented, sound science and risk-based chemical safety legislation and best practices
- 4 Influencing Business Partners** to promote the safe management of chemicals within their own operations
- 5 Engaging Stakeholders**, understanding and responding to their concerns and expectations for safer operations and products and communicating openly on our performance and products
- 6 Contributing to Sustainability** through improved performance, expanded economic opportunities and the development of innovative technologies and other solutions to societal challenges

Company: _____

CEO Signature: _____ Date: _____

Responsible Care[®] Approved by the ICA Board of Directors, May 29, 2014

Copyright © ICA

Only the English language version is the official document

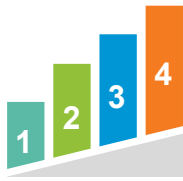
CERTIFIED ISO 9001:2015 COMPANY

CERTIFIED ISO 50001:2011

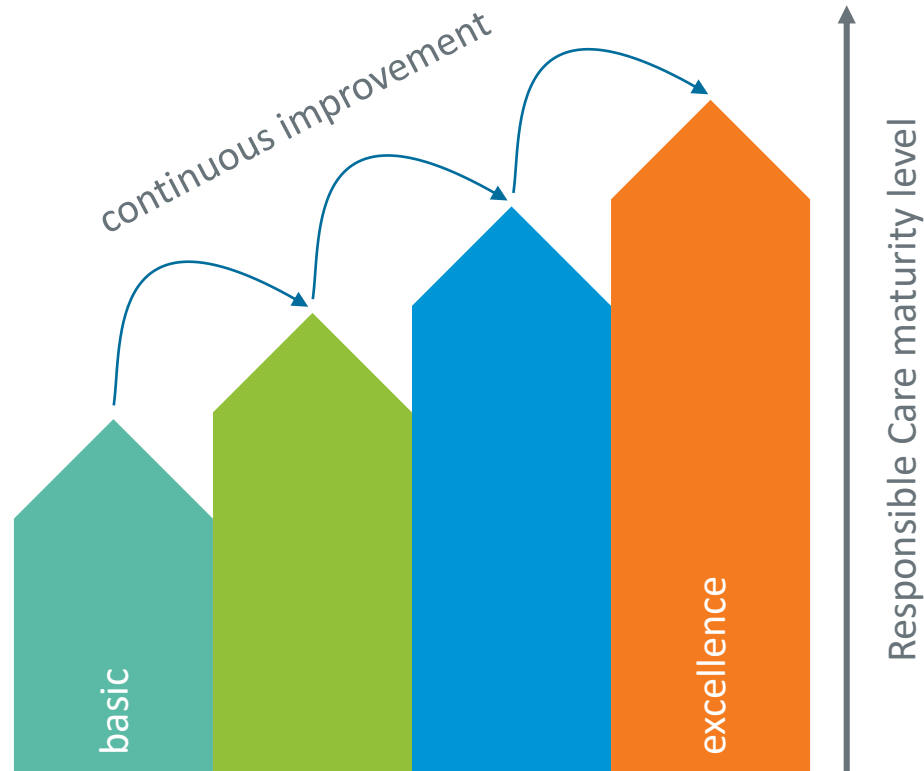
International Organization for Standardization ISO 14001

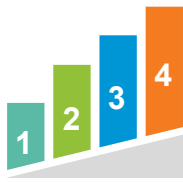
International Organization for Standardization ISO 45001

ISO 26000



2. Creation of maturity levels driving continuous improvement





Maturity levels



Level 1: Commit to Responsible Care

The candidate commits to Responsible Care and starts acknowledging the implementation steps

Level 2: Initiate and Plan

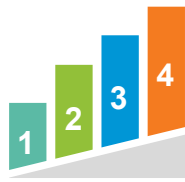
= PD: Planning and Doing: ad hoc actions

Level 3: Improve continuously

= PDCA: Planning Doing Checking and Acting: full management system approach

Level 4: Promote and Sustain Excellence

= Improved performance, improved effectiveness, share best practices, front runner



Examples of maturity levels: Safeguarding people and the environment



How are risks and exposures determined?

- a) Not systematically, but compliant to applicable legislation.
- b) Risk analyses are systematically applied to evaluate risks to employees related to processes, equipment and potential exposure to chemical, physical or biological agents.
- c) Applied risk analysis are workplace specific and individual specificities (pregnant women, handicaps, young employees, etc.) are taken into account with respect of privacy/confidentiality laws and protection of medical data of these workers.
- d) Good practices on risk analysis are promoted to business partners or through associations.



3. Development of practical support for regional implementation



Consists of two tools:

- Management framework
- Self-assessment tool

Key characteristics

- ✓ User friendly
- ✓ Flexible – adaptable to regional needs
- ✓ Suitable for all size of companies
- ✓ Integrating existing national and international practices
- ✓ Respecting the unique Responsible Care characteristics



Structure of the management framework and self-assessment tool



The entire framework contributes to sustainability, specific focus questions are in chapter 6

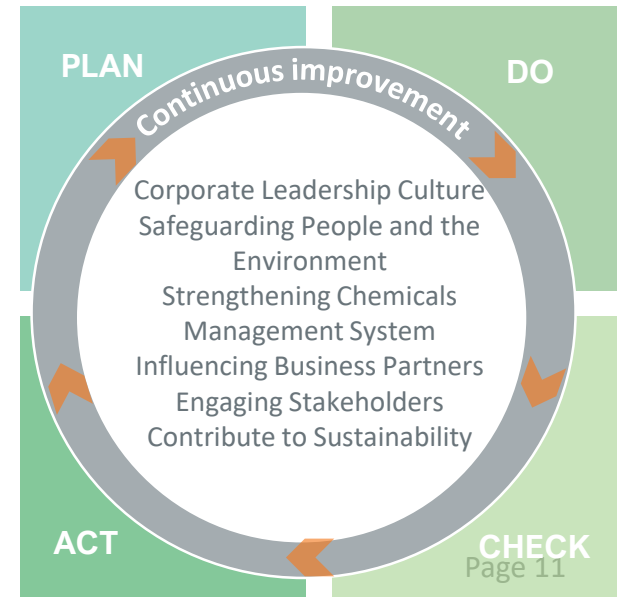


What is the management framework?



- A guidebook (PDF) which explains the requirements of Responsible Care:
 - what it is
 - who the main actors are
 - what maturity levels are
 - how to implement it according to the six elements of the Responsible Care Global Charter.



- Based on Deming Cycle (PDCA Cycle), achieving continuous improvement





The self-assessment tool in detail



Responsible Care self-assessment tool


This tool guides companies in the chemical sector towards the implementation of Responsible Care.

It consists of following pages:

- Start and prefill
- Glossary
- Identification
- Six sets of questions, one for each Responsible Care chapter
- General outcome page scoring your Responsible Care performance
- Tips and best practices
- Two tabs with specific reports on reaching external standards and on reaching Sustainable Development Goals
- Action plan
- Two technical pages

This excel tool can best be used at zoom 100%.

version: 12/04/2019
Arcadis



Responsible Care[®]

OUR COMMITMENT TO SUSTAINABILITY

Responsible Care is the chemical industry's worldwide voluntary commitment to drive continuous improvement and achieve excellence in sound chemicals management.

Cefic has elaborated a new Responsible Care management system for Europe to pave the way for more European chemicals manufacturers to join the Responsible Care family whilst enhancing industry's reputation and trust.

The revised Responsible Care management system provides the European chemicals companies with a clear, inclusive and progressive pathway to continuous improvement.

It includes the development of practical tools (a Responsible Care management framework and a Responsible Care self-assessment tool) valuable to both companies and national associations, and the creation of maturity levels to help companies grow over time. It connects the European Responsible Care[®] to the highest possible standards (i.e. quality management ISO9001, environmental management ISO14001, EMAS, energy management ISO50001, health & safety ISO45001, ISO26000, RC 14001 and RCMS, two technical specifications from the American Chemistry Council globally applied) along with Sustainability Principles (i.e. UN Sustainable Development Goals, Cefic Sustainability Charter and ChemistryCan Initiative). Ultimately, it contributes to a harmonized approach of Responsible Care at the ICCA level.

The revised management system wants to be inclusive, enabling small and large, companies or sites, with experience in Responsible Care and standards or without, to get started on performance excellence and have a view on how to improve over time. Therefore, it includes **4 maturity levels** representing four different levels of Responsible Care implementation as follow:

Level 1	Commit to Responsible Care	The candidate commits to Responsible Care and starts acknowledging the implementation steps.
Level 2	Initiate and Plan	PD - Planning and Doing: the organisation has started implementing Responsible Care throughout its business, plans are made to improve and implement
Level 3	Improve Continuously	PDCA - Planning Doing Checking and Acting: the organisation has reached a level of implementation where the plans and actions are not only done, but also assessed to drive continuous improvement; full management system approach.

Front page
Start and prefill
Glossary
Identification
Chapter 1
Chapter 2
Chapter 3
Chapter 4
Chapter 5
Chapter 6
General outcome
Tips
Specific reports
SDG report
Action plan
Technical pa ...



What is the Responsible Care self-assessment tool?



A questionnaire with 101 multiple-choice questions in excel

- Pre-fill buttons when ISO Certified
- Four answers for each question, reflecting the four maturity levels
- Implementation tips provided
- Answers linked with international and market standards



How much time does it take?



Total time required: ave. 3 hours

Number of questions to complete manually once certified



79 questions when ISO 9001 certified

70 questions when ISO 14001 certified

74 questions when ISO 45001 certified

81 questions when ISO 50001 certified

63 questions when ISO 9001 and 14001 certified

66 questions when ISO 14001 and 45001 certified

54 questions when ISO 9001, ISO 14001 and 45001 certified

53 questions when ISO 9001, ISO 14001, 45001 and 50001 certified

67 questions when EMAS certified

55 questions when RC14001 certified

63 questions when RCMS certified

26 questions are linked to ISO 26000
43 questions are linked to 17 UN
SDGs



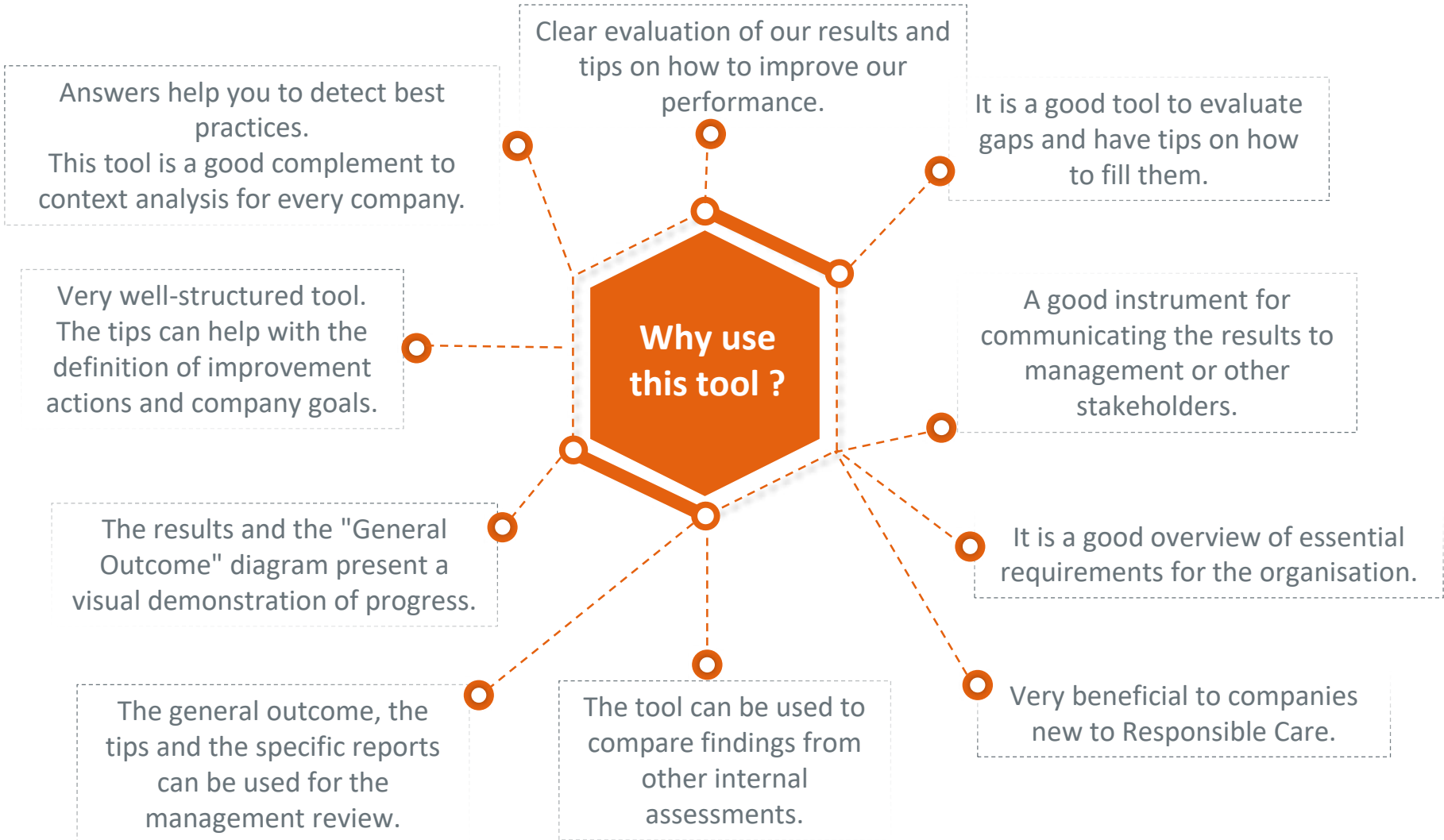
Responsible Care self-assessment tool tested by 55 companies over Europe



Testing feedback endorsed in the final version of the Responsible Care self-assessment tool



Value of the Responsible Care self-assessment tool



Launch of the new Responsible Care management framework and self-assessment tool



- **Launched in 13 European countries** (Denmark, Slovenia, Sweden, Czech Republic, Finland, Italy, Romania, Bulgaria, Germany, Switzerland, Slovak Republic, Austria and Croatia); Cefic joined 11 of these launch events (9 face to face meetings and 2 webinars);
- **Presented in international ICCA meetings** in China (April 2019) and in Buenos Aires (May 2019). Great interest especially from Chinese, Japanese and Korean Companies.

Main outcomes of the launch events



- **Positive feedback from European companies** that found the RC self-assessment tool useful and they are ready to start using it;
- Request of translating it into local languages: already translated into Bulgarian, Slovak, Czech, Italian, Romanian, German (ongoing), Polish (ongoing), Spanish (ongoing), Croatian (ongoing) and Hungarian (ongoing).
- Request from distributors and transporters of adjusting the questionnaire to their needs: we are now developing these tailor-made questionnaires.
- Request of moving to a web-based tool to facilitate the collection of the data and their use at regional and European level: proposal approved by the RCIT and PC: the web-tool will be available in June 2020.



Practical guidance on the use of the Responsible Care self-assessment tool



- [Link to instruction movie](#)
- If you would like more information on how to use the self-assessment tool please look at the Appendix of the Responsible Care management framework on the [Responsible Care webpage](#)

Thank you!

Questions ?

Contact Giulia Casasole

Responsible Care Manager

gca@cefic.be

